

Section 14

14 Corrupted Database



Warning! It is recommended to do a back up of the file before you begin this procedure.

Run Windows Explorer.

Warrior 16 Bit versions. Go to the C:\warrior\bin directory.

Warrior 32 Bit versions. Go to the C:\warrior\bin32 directory.

Find a file called dbdump.exe.

Double click on dbdump.exe.

This will open a window called Warrior Database Dumper.

In this window click on file and click on Dump Records.

Select corrupted database.

Click on file again and click on Scan Linkage.

Select corrupted database.

Click on file again and click on Scan Data Blocks.

Select corrupted database.

Close the Warrior DataBase Dumper Window.

There will be three new files in the c:\warrior\data directory.

They will have the same name as the corrupted database with the following extension: dsc, scn, and dmp.

Email these three files to sds.info@warriorsystem.com

The programmer will attempt to create a patch. The patch will be Emailed back to you and you will run dbdump.exe again from the c:\warrior\bin directory 16 Bit Software, c:\warrior\bin32 32 Bit software.

From the Data Base Dumper Window click on file, then click on Patch. Select corrupt database and following instructions in Email.

An example of a patch is attached below.

Example of Patch for data base 14377.db.

A set of patch number will be supplied by Scientific Data Systems, Inc.

Long word patch:

Hex offset	Old Hex Value	New Hex Value
000000D8	02149C8A	037FFD5A
00000378	02147B86	02112D6C

This is an example so do not use these numbers, the correct numbers will be supplied by Scientific Data Systems, Inc.

Open Dbdump.exe by double clicking on the file.

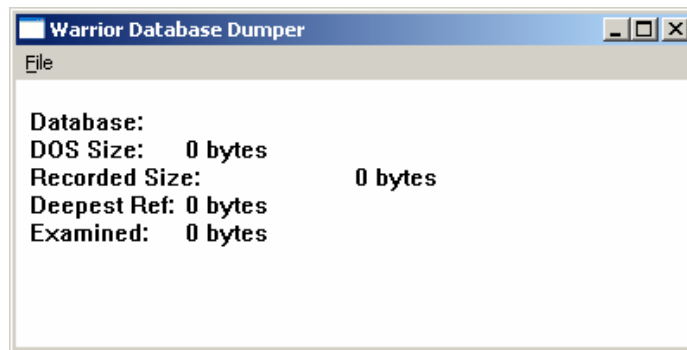


FIG: 14.1 Run Dbdump.exe

Click on File and then click on Patch:

The Select Database for Manual Patch window will appear.

Select the corrupted database and click on open.

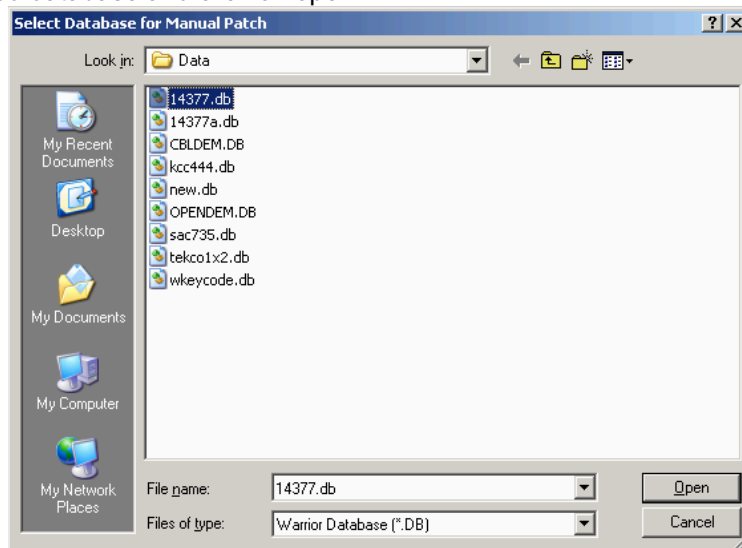


FIG: 14.2 Select Database

The Manual Patch window will appear:
Do not enter anything in the Password box.

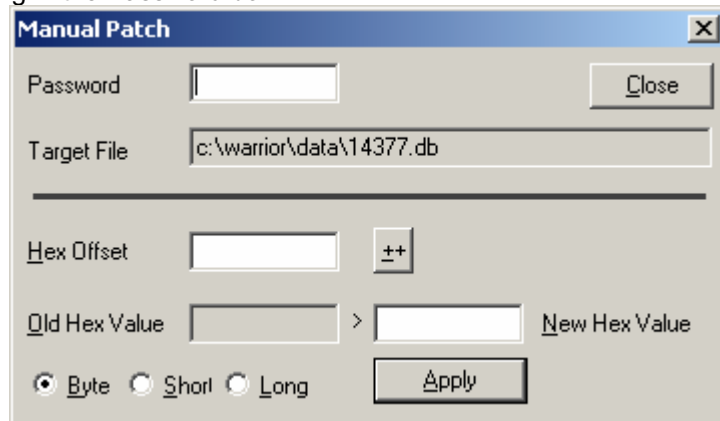


FIG: 14.3 Manual Patch

Long word patch:

Hex offset	Old Hex Value	New Hex Value
000000D8	02149C8A	037FFD5A
00000378	02147B86	02112D6C

Select The Long Button, enter the Hex Offset number, the Old Hex Value will appear enter the New Hex Value, press apply.

If more than one patch set of numbers were supplied enter the next set and select apply.

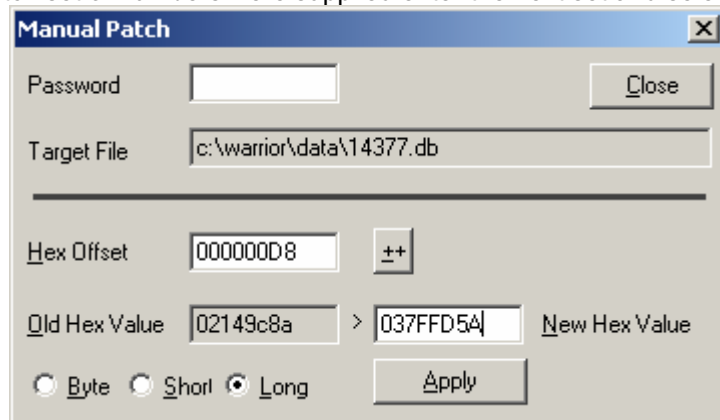


FIG: 14.4 Set values

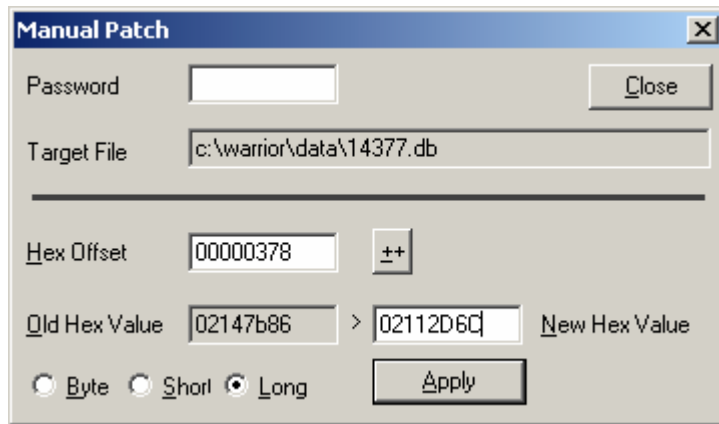


FIG: 14.5 Apply and Close

Close the Manual Patch window, and the Warrior Database Dumper window. The database should be accessible.